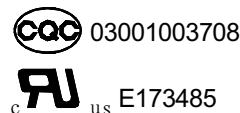


| | |
|----------------|---------------|
| <h1>通用继电器</h1> | <h1>TRAF</h1> |
|----------------|---------------|

- Ideal for motor switching in appliances and HVAC
- 20A switching capability
- Designed for high inrush compressor loads
- Semi-sealed construction
- Sealed version available
- Conform to RoHS,ELV directive



30.5×16.0×23.5



ORDERING CODE 订购代码

| | | | | | | |
|---|----------------------|-----------|---|-----------|-----------------|--|
| <u>TRAF</u> — <u>12VDC</u> — <u>S</u> — <u>H</u> | | | | | | |
| 1 2 3 4 | | | | | | |
| <table style="width: 100%;"> <tr> <td style="width: 50%;">1. Relay Model 继电器型号</td> <td style="width: 50%;">4. 触点转换形式</td> </tr> <tr> <td>2. Coil Nominal Voltage 线圈额定电压 5,6,12,24,48VDC</td> <td>H: Form A</td> </tr> <tr> <td>3. S: Sealed 密封</td> <td></td> </tr> </table> | 1. Relay Model 继电器型号 | 4. 触点转换形式 | 2. Coil Nominal Voltage 线圈额定电压 5,6,12,24,48VDC | H: Form A | 3. S: Sealed 密封 | |
| 1. Relay Model 继电器型号 | 4. 触点转换形式 | | | | | |
| 2. Coil Nominal Voltage 线圈额定电压 5,6,12,24,48VDC | H: Form A | | | | | |
| 3. S: Sealed 密封 | | | | | | |

COIL DATA 线圈参数 (at 20°C)

| | | | | | | |
|---------------------------------|-------------------------------|-----|-----|------|-------|------|
| Nominal Voltage 额定电压(VDC) | 5 | 6 | 12 | 24 | 48 | 0.9W |
| Coil Resistance 线圈阻值(Ω ±10%) | 28 | 40 | 160 | 640 | 2560 | |
| Rated Current 额定电流(mA) | 180 | 150 | 75 | 37.5 | 18.75 | |
| Max Operate Voltage 最大吸合电压(VDC) | 3.75 | 4.5 | 9 | 18 | 36 | |
| Min Release Voltage 最小释放电压(VDC) | 0.5 | 0.6 | 1.2 | 2.4 | 4.8 | |
| Max Applicable Voltage 最大过载电压 | 70°C时额定电压的130%，23°C时额定电压的170% | | | | | |

CONTACT DATA 触点参数

| | |
|------------------------------|--|
| Contact Form 触点形式 | 1H |
| Contact Material 触点材料 | Silver Alloy |
| Load 负载 | Resistive load(COS Φ=1) |
| Contact Ratings 触点负载 | 20A 250VAC |
| Minimum load 最小负载 | 100mA 5VDC |
| Max Switching Voltage 最大转换电压 | 250VAC |
| Max Switching Current 最大转换电流 | 20A |
| Max Switching Power 最大转换功率 | 5000VA |
| Contact Resistance 接触电阻 | 100mΩ Max at 6VDC 1A |
| Life Expectancy 寿命 | Electrical 电气寿命: 100,000 Operations(at30Operations/minute) |
| | Mechanical 机械寿命: 10,000,000 Operations(at300Operations/minute) |

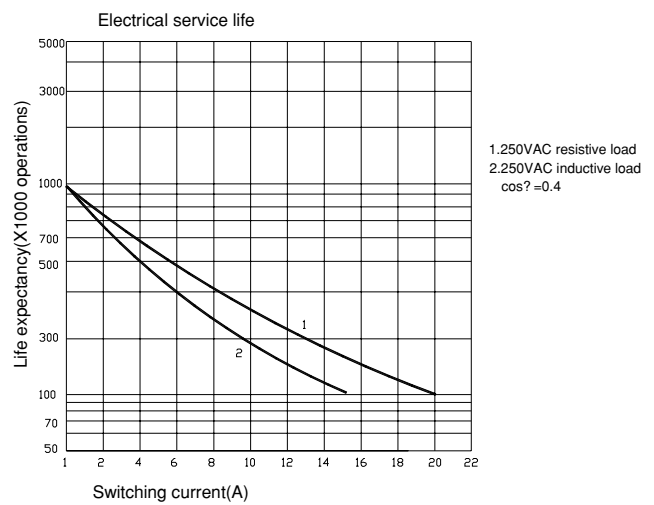
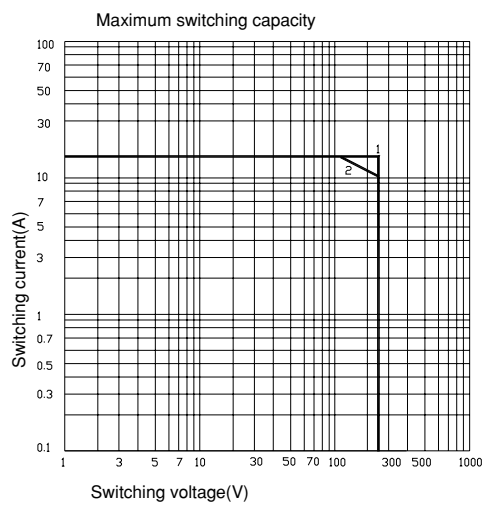
■ CHARACTERISTICS DATA 性能参数

| | |
|---|---------------------------------|
| Insulation Resistance 绝缘阻值 | 100MΩ Min at 500VDC |
| Dielectric Strength Between Open Contacts 触点间耐压 | 1500VAC(for one minute) |
| Between Contacts and coil 触点与线圈间耐压 | 4500VAC(for one minute) |
| Operate Time 吸合时间 | 20ms |
| Release Time 释放时间 | 10ms |
| Temperature Range 环境温度 | -25°C to +55°C |
| Shock Resistance 冲击 | Operating Extremes 动作极限: 20G |
| | Damage Limits 破坏极限: 100G |
| Vibration Resistance 振动 | 10-55Hz, 1.5mm |
| Max. switching frequency 最大转换频率 | Mechanical: 18,000operations/hr |
| | Electrical: 1,800operations/hr |
| Humidity 湿度 | 40-85% |
| Weight 重量 | Approx 23g |
| Safety Standard 安全标准 | UL cUL CQC |

■ APPROVED STANDARDS 安全标准

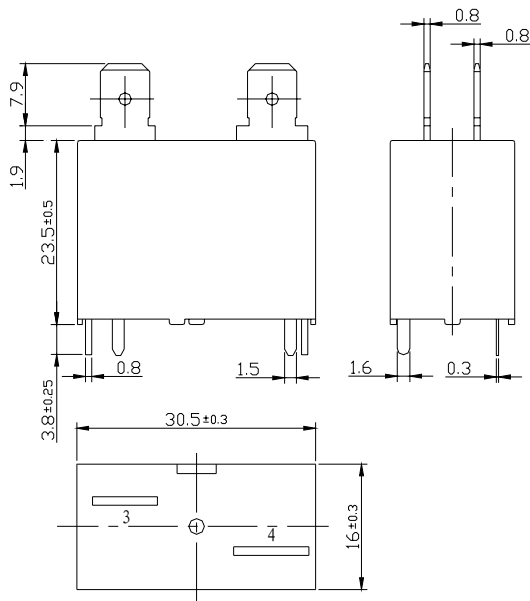
| Model(型号) | Coiling rating (线圈电压) | Safety Standard (安全标准) | Contact rating (触点负载) |
|-----------|-----------------------|------------------------|-----------------------|
| TRAF | 5 to 48VDC | UL/cUL | 20A 250VAC |
| | | CQC | 20A 250VAC |

■ ENGINEERING DATA 设计参数

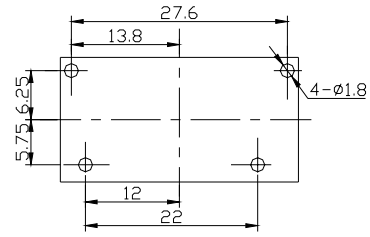


■ OVERALL AND MOUNTING DIMENSIONS 安装图

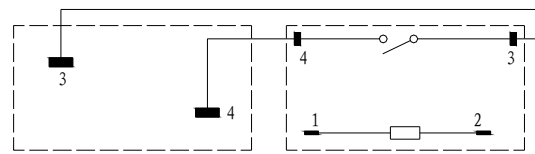
TRAF-H



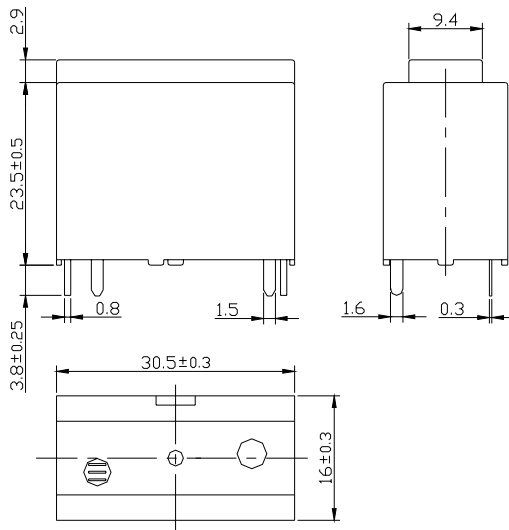
底视图 (Bottom terminals)



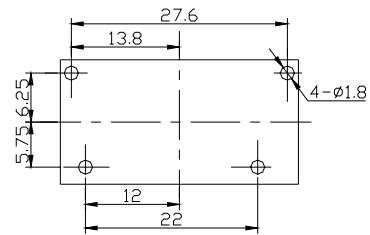
接线图 (Terminal arrangement)



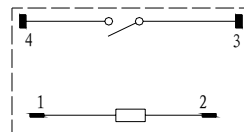
TRAF-H-P



底视图 (Bottom terminals)



接线图 (Terminal arrangement)



声明:

本产品规格书仅供客户使用时参考, 如有更改, 恕不另行通知。