



DK SERIES

GENERAL PURPOSE FILTERS



GENERAL PURPOSE ONE-STAGE FILTERS

INTRODUCTIONS

1. Effectively control EMI suppression of both line-to-line and line-to-ground noise.
2. All part numbers are UL recognized, CSA certified and VDE approved.

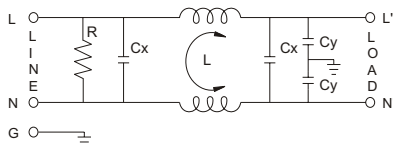
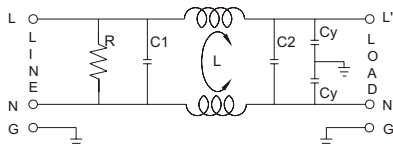
COMPONENTS

PART NO.	C1 (uF)	C2 (uF)	L (mH)	Cy (pF)	R (Ω)
02DKAG5	0.22	0.22	2.1	3300	2.2M
02DKAW5					
03DKAG5					
03DKAW5			3.2		
03DKDG3S					
03DKDW3S			4.5		
05DKAG5					
05DKAS5			2.7		
05DKAW5					
05DKDG3S			2.5		
05DKDW3S					
10DKAG5			1.7		
10DKAS5					
10DKAW5					
10DKDG3S					
10DKDW3S					
15DKDG3	0.68X3	-	3.6	10000	200K
* 16DKCG5	0.47	0.47	6.0	10000	330K
20DKBG5	0.22	0.22	1.4	3300	2.2M
20DKBS5					
30DKCS5	0.22	0.47	0.59	10000	470K

* DEMKO approved only

PART NO.	Cx (uF)	L (mH)	Cy (pF)	R (Ω)
03DKBG5B	0.15	2.5	4700	1.0M
03DKBW5B				
06DKBG5B		1.0		
06DKBW5B				
12DKBG5B		0.7		
12DKBW5B				
16DKCG5B		0.65		
16DKCW5B				
20DKCG5B		0.60		
20DKCS5B				
30DKCS5B	0.47	0.67	10000	470K

ELECTRICAL SCHEMATIC



XXDKXX5B

SPECIFICATIONS

1. Maximum leakage current each
line-to-ground @ 115VAC 60Hz: 0.25mA
1.0mA (10000pF)
@ 250VAC 50Hz: 0.45mA
2.0mA (10000pF)
2. Hipot rating (one minute)
line-to-ground: 2250VDC
line-to-line: 1450VDC
3. Operating frequency: 50/60Hz
4. Rated voltage: 115/250VAC

MINIMUM INSERTION LOSS IN dB

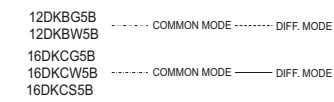
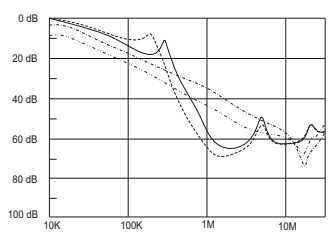
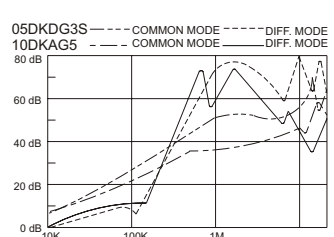
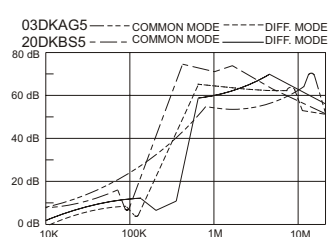
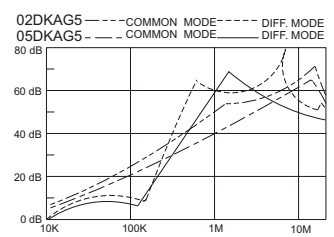
COMMON MODE (L-G) IN 50 OHM SYSTEM							
CURRENT RATING	STYLE	FREQUENCY-MHz					
		.15	.50	1.0	5.0	10	30
2, 3, 5A		22	30	38	47	50	40
3A (S), 5A (S)		22	30	38	50	55	45
10A, 10A (S)		15	20	28	45	45	45
15A		20	30	35	45	50	35
16A		25	35	40	45	45	20
20A		14	19	28	40	42	35
30A		10	20	30	40	45	30
DIFFERENTIAL MODE (L-L) IN 50 OHM SYSTEM							
2, 3, 5A		10	46	48	50	50	45
3A (S), 5A (S)		12	46	48	55	50	45
10A, 10A (S)		8	38	55	45	45	45
15A		10	40	50	50	50	50
16A		20	50	50	50	40	30
20A		10	35	50	50	45	40
30A		10	30	50	45	35	40

COMMON MODE (L-G) IN 50 OHM SYSTEM							
CURRENT RATING	STYLE	FREQUENCY-MHz					
		.15	.50	1.0	5.0	10	30
3A	BG5B, BW5B	20	30	35	45	50	45
6A	BG5B, BW5B	15	20	25	40	45	45
12A	BG5B, BW5B	10	20	22	35	45	40
16A	CG5B, CW5B	10	18	20	35	45	30
20A	CG5B, CS5B	10	18	20	30	35	35
30A	CS5B	10	25	30	45	50	35
DIFFERENTIAL MODE (L-L) IN 50 OHM SYSTEM							
3A	BG5B, BW5B	7	35	50	45	45	45
6A	BG5B, BW5B	10	20	45	45	50	45
12A	BG5B, BW5B	10	20	40	45	45	45
16A	CG5B, CW5B	10	18	40	40	40	35
20A	CG5B, CS5B	10	12	35	35	40	40
30A	CS5B	12	40	50	50	50	45

SERIES DIMENSIONS

CURRENT RATING	STYLE	DIMENSIONS IN INCHES/mm					
		A	B	C	D	E	
2A	AG5	2.99 75.9	2.04 51.8	0.90 22.9	2.38 60.5	2.79 70.9	
	AW5	1.83 46.5					
3A	AG5	2.99 75.9		1.16 29.5	1.29 32.8	1.575 40.00	0.61 15.5
	AW5	1.83 46.5					
	DG3S	3.14 79.8					
	DW3S	2.55 64.8					
5A	AG5	2.99 75.9		2.30 58.4	1.16 29.5	2.38 60.5	2.79 70.9
	AW5	1.83 46.5					
	AS5	3.37 85.6					
	DG3S	3.14 79.8					
10A	DW3S	2.55 64.8	2.22 56.4	1.29 32.8	1.575 40.00	0.63 16.0	
	AG5	3.25 82.5					
	AW5	2.08 52.8					
	AS5	3.37 85.6					
	DG3S	3.22 81.5					
15A	DW3S	2.63 66.8	2.06 52.3	1.54 39.1	2.94 74.7	3.34 84.8	
16A	DG3	4.35 110.5					
20A	CG5	3.75 95.3	2.52 64.0	1.54 39.1	2.94 74.7	3.36 85.3	
	BG5	3.25 82.5					
	BS5	3.37 85.6					
30A	CS5	3.87 98.3	2.04 51.8	1.54 39.1	2.94 74.7	3.36 85.6	
							85.3

INSERTION LOSS (TYPICAL)



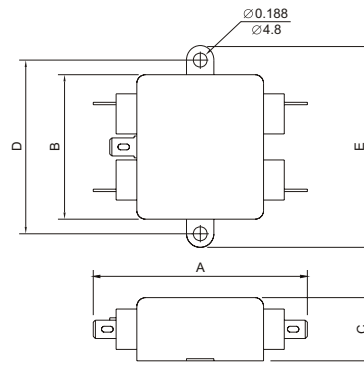
SERIES DIMENSIONS

CURRENT RATING	STYLE	DIMENSIONS IN INCHES/mm										
		A	B	C	D	E	F					
3A	BG5B	2.13 54.00	2.54 64.5	1.34 34.0	1.77 45.0	1.18 30.0	-					
	BW5B						$\frac{3.94}{100.0}$					
6A	BG5B						-					
	BW5B						$\frac{3.94}{100.0}$					
12A	BG5B						-					
	BW5B						$\frac{3.94}{100.0}$					
16A	CG5B						2.40 61.00	2.81 71.5	1.79 45.5	2.02 51.3	-	-
	CW5B						$\frac{3.94}{100.0}$					
20A	CG5B						2.95 75.00	3.34 84.8	2.04 51.8	2.52 64.0	-	-
	CS5B						-					
30A	CS5B	4.06 103.00	4.49 114.0	2.22 56.5	3.74 95.0	1.83 46.4	-					

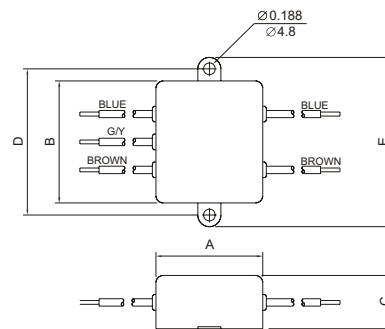
MECHANICAL CONSTRUCTION



AG5



AW5

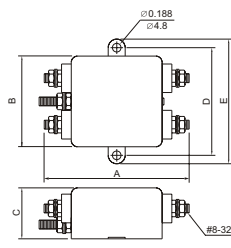


ALL WIRE LEADS 4.0" LONG MIN.

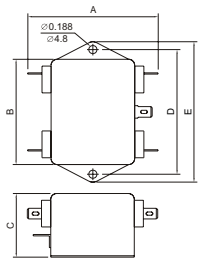
UNIT: $\frac{\text{INCH}}{\text{mm}}$

MECHANICAL CONSTRUCTION

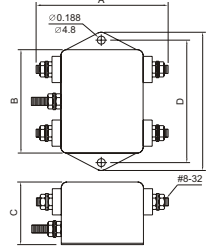
AS5



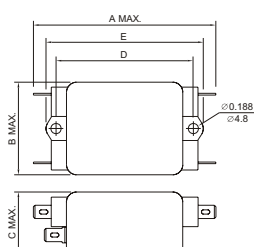
BG5



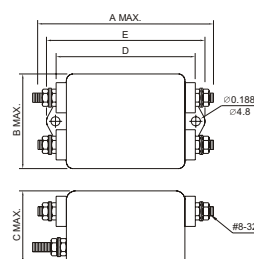
BS5



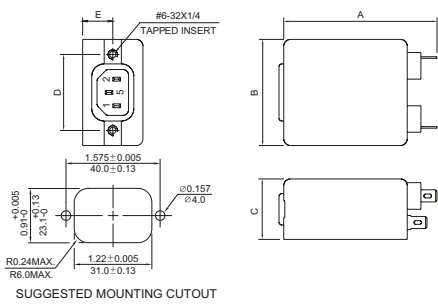
CG5



CS5



DG3S



UNIT: INCH
mm

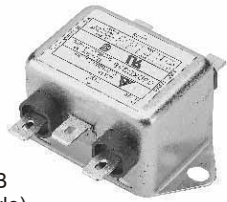
MECHANICAL CONSTRUCTION



DG3



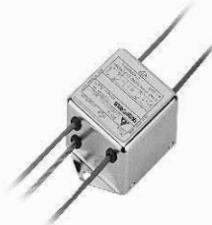
DW3S



BG5B, BW5B
(option wire style)



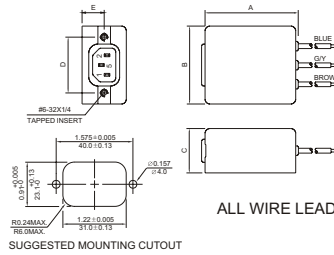
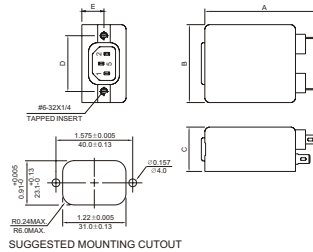
CG5B



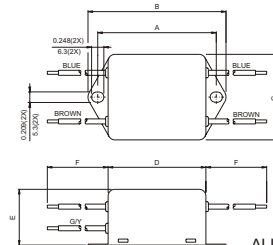
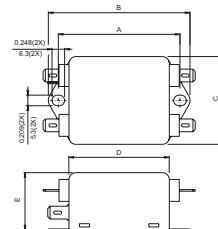
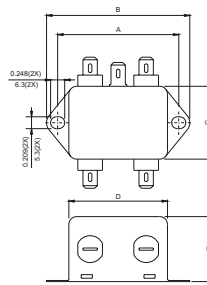
CW5B



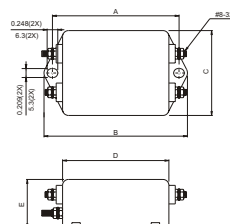
CS5B



ALL WIRE LEADS 4.0" LONG MIN.



ALL WIRE LEADS 4.0" LONG MIN.



UNIT: $\frac{\text{INCH}}{\text{mm}}$