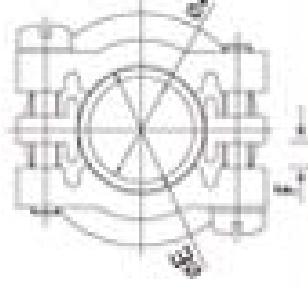
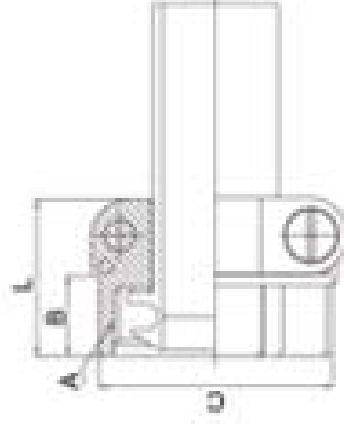
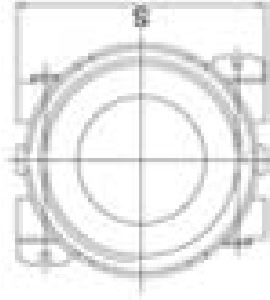


CABLE CLAMP

WPS3057-*A



Item No.	Shell size (ps.1)	Coupling Threads A	B	Tolerable cable Ca ± 0.41	Clamp E	F	Length L ± 0.3	S + 0.8	Content e
WPS3057-4A	10S	5/8-24UNEF-2A	10.3	20.6	7.7	2	20.7	22.2	6.6
WPS3057-6A	14S	3/4-20UNEF-2B	10.3	24.6	10.8	2.8	22.2	27.1	8
WPS3057-8A	16S, 16	7/8-20UNEF-2B	10.3	27.8	14.3	2.8	23.8	29.4	11
WPS3057-10A	18	1-20UNEF-2B	10.3	30.2	15.9	3.2	23.8	31.8	14
WPS3057-12A	20, 22	1-3/16-18UNEF-2B	10.3	34.9	19.8	4.0	23.8	37.3	16
WPS3057-16A	24, 28	1-7/16-18UNEF-2B	10.3	42.1	23.8	4.8	26.2	42.9	19
WPS3057-20A	32	1-3/4-18UNS-2B	11.9	51.2	31.8	6.4	27.8	51.6	19
WPS3057-24A	36	2-18UNS-2B	13.5	56.4	34.9	7.5	29.4	57.9	24
WPS3057-40A	48	3-16UN-2B	16.7	83.3	60.3	11.5	44.4	88.9	35

RE: SELECTION OF COMMODITY NAME

(a) Please refer to the column of "Suitable shell size"

Please select the commodity names suitable for the shell size of the connector.

Example: For connector WPS 3106A18-1P, because it's shell size is 18, the commodity name of cable clamp shall be WPS3057-10A

(b) The maximum size of the cable used in clamping.

Please make sure if it is in conformity with the sizes shown in above table. It shall be picked out if it exceeds the sizes as shown in table.

Bushing WPS3057-16-40As kept inside 2-3 bushing. If it is unable to be put in more, please select the connector of the size above 3.